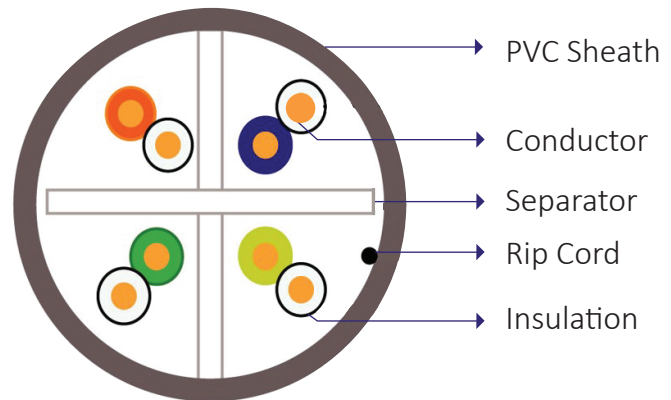
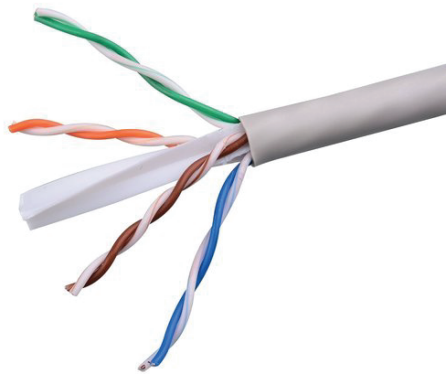


CAT 6 UTP 24 AWG CABLE PVC



DESCRIPTION

Datacom Category 6 cable is designed for residential, Enterprise & other 1G ig LAN applications. Category 6 cable shall meet ANSI/TIA-568-2.D Category 6 component standard. The conductors shall be 24 AWG construction with Polyolefin insulation. The copper conductors shall be twisted in pairs and covered by PVC jacket. CAT 6 compliance ensures the cable support. 1000BASE-T Gigabit Ethernet. The Cat 6 UTP 24AWG cable shall have a nominal diameter of 5.7 mm.

APPLICATION

- 10BASE-T through 1000BASE-T Ethernet
- Power over Ethernet (PoE/POE +)
- ATM and token ring
- Power over Ethernet
- Wireless connectivity
- Intelligent lighting
- Security cameras
- Audio/visual, including HDBaseT.
- Building automation systems.

FEATURES

- The cable shall meet ANSI/TIA-568-D.2 Cat 6 and ISO/IEC 11801-2ND EDITION Class EA performance requires.
- Small cable outside diameter (5.7 mm) increases pathway capacity and improves airflow to critical active equipment.
- Independently tested and verified to meet ANSI/TIA Cat 6 and ISO Class E performance.
- Available in PVC jacket.

DESIGN CONSIDERATIONS

- Use with Datacom Cat 6 UTP connectors,
- Bend radius ≤ 8 cable outside diameter
- 25 Years performance warranty for channel.

STANDARDS COMPLIANCE

- ANSI/TIA-568-D.2
- ISO/IEC 11801 2ND EDITION
- ROHS COMPLIANT

CAT 6 UTP 24 AWG CABLE PVC

TECHNICAL SPECIFICATIONS

Mechanical Properties

Bending Radius	≤ 8 x Cable Diameter
Pulling Tension, maximum	100 N

Electrical Properties (-20°C ± 5° C)

Conductor Resistance (Ω/km)	98 (Max.)
Mutual Capacitance (nF/100M)	5.6 (Max.)
Resistance Unbalance (%)	5 (Max.)
Characteristic impedance (Ω)	100 ± 15
Nominal velocity of propagation	69 %
Worst Delay Skew	≤45 ns/100 m

Environmental specifications

Operation Temperature	-15 to +75 °C
Installation Temperature	0 to +50 °C

Packing information

Packing Length	305 M per Box
Packing Weight (K.G)	Net weight 12.15 kg

CONSTRUCTION

Category	CAT 6 U/UTP - 24 AWG	
Color	Grey	
Conductor	Solid Bare Copper	24 AWG (0.510 mm ± 0.015 mm)
Insulation	High-Density Polyethylene (HDPE)	
Insulation diameter	0.990 mm ± 0.05 mm	
Twisting	4 twisted pairs, 2 single conductors paired Twisted pair color code: 1: White Blue/Blue 2: Orange White/Orange 3: White Green/Green 4: Brown White/Brown	
Cable lay-up	4 pairs with different pitches	
Outer diameter	5.7 mm ± 0.3 mm	
Outer jacket Materials	PVC	

TRANSMISSION CHARACTERISTICS

Freq. (MHz)	IL (dB/100) m	NEXT (dB) min.	PSNEXT (dB) min.	ACRF (dB/100) min.	PSACRF (dB/100) min.	Return Loss (dB) min.
1	2.1	65.0	62.0	63.3	60.3	19.0
4	4.0	63.0	60.5	51.2	48.2	19.0
8	5.7	58.2	55.6	45.2	42.2	19.0
10	6.3	56.6	54.0	43.3	40.3	19.0
16	8.0	53.2	50.6	39.2	36.2	18.0
20	9.0	51.6	49.0	37.2	34.2	17.5
25	10.1	50.0	47.3	35.3	32.3	17.0
31.25	11.4	48.4	45.7	33.4	30.4	16.5
62.5	16.5	43.4	40.6	27.3	24.3	14.0
100	21.3	39.9	37.1	23.3	20.3	12.0
200	31.5	34.8	31.9	17.2	14.2	9.0
250	35.9	33.1	30.2	15.3	12.3	8.0

ORDERING INFORMATION

Description

Datacom Cat 6U/UTP 4Pair 24 AWG Cable-PVC 305m/Box Grey

Part No.

DC-CBL-C64P1-PVC