

FIBER OPTIC ADAPTERS



SC/APC FLANGED
ADAPTER



SC/APC FLANGELESS
ADAPTER



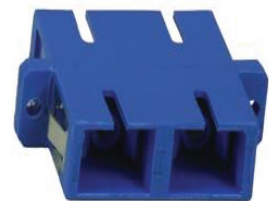
LC/APC FLANGED
ADAPTER



LC/APC FLANGELESS
ADAPTER



SINLE MODE LC DUPLEX
ADAPTER



SINLE MODE SC DUPLEX
ADAPTER

DESCRIPTION

Datacom Single Mode APC & UPC adapters are compact in design with low insertion, return loss and back reflection. The sleeves are enclosed in high-quality engineering plastic designed for all fiber optic connector types ensuring the corresponding connector parts dock well and are securely held. Datacom fiber adapters are constructed of engineered thermoplastic with precision zirconia ceramic split sleeves providing low loss fiber connections over high and low temperature extremes. Adapters are available with mounting flanges or flangeless for higher density applications. Wide range of adapters are available such as SC/APC Simplex, SC/APC Duplex, SC UPC Duplex, LC/APC Duplex, LC/UPC Duplex.

APPLICATION

- Patch panel and wall box connection interface.
- FTTH Applications.
- Telecoms, Datacenters.
- User outlet, Industrial Patch Panel.
- Telecom Rooms, Datacenters, LAN & WAN.

STANDARDS COMPLIANCE

- TIA-568.3-D
- TIA-604-3, FOCIS-3
- IEC61754-4
- GR-326 or IEC 61300 series
- RoHS

FEATURES

- High precision alignment.
- Low insertion and return loss and back reflection.
- Available in Plastic and metal housing.
- Easy installation with a simple clamping mechanism.
- Available in flanged and flangeless types.
- Metal spring latch for panel retention.
- Dust protection caps as standard
- Precision zirconia ceramic split sleeve

FIBER OPTIC ADAPTERS

PHYSICAL CHARACTERISTICS

Range of Mode	Single Mode,Multi Mode
Adapter type	Simplex,Duplex
Connector Type	SC / LC
Polish or Ferrule Interface Type	APC/UPC

PERFORMANCE CHARACTERISTICS

Insertion Loss (Typical)	0.1 dB
Insertion Loss (Maximum)	0.2dB
Durability	<0.20, Typical Change ,500Mating
Sleeve Pull force	0.2-0.6 Kgf
Operating Temperature	-40 °C ~ 85 °C

ORDERING INFORMATION

Description

Datacom Flanged Adapter Zirconia Sleeve

Datacom Flangless Adapter Zirconia Sleeve

Part No.

DC-ADXX-BB-Y-ZZ

DC-ADXX-BB-Y-FL-ZZ

- ** XX - Interface Type(SA=SC/APC,LA=LC/AP,SC=SC/UPC,LC=LC/UPC).
BB - Range of Mode(SM=Single Mode,MM=OM2,M3=OM3,M4=OM4).
Y - Adapter type(S= Simplex,D= Duplex).
ZZ - Color (GN=Green,BL=Blue,IV=Ivory,AQ=Aqua).
** Flangless is only applicable for SM APC Adapters.